

## PUMPS FOR YOUR YACHT ENGINE ROOM

A reliable operation is essential when sailing in the world waters – and when relaxing and enjoying your yacht sailing, high quality and reliable pumps are creating the foundation for a peaceful and safe voyage on board your valuable yacht and a must have in the engine room.

### PROVEN TECHNOLOGY

These are the words that describes our pump solutions, which have been manufactured for more than 100 years.

Our pump range covers self-priming and in-line centrifugal pumps plus internal gear pumps (positive displacement pumps) for almost all applications.

All DESMI pumps are manufactured in accordance to the latest standards in force within the Yacht segment.

All of them are known for their:

- High efficiency
- Low NPSH
- Compact design
- Easy installation
- Low maintenance costs

Moreover, DESMI is the perfect partner for “tailor made” pumping solutions to support Owners, Shipyards and Engineering companies with the best equipment selection.

### DESMI Pump Range for Yachts covers:

- Fire pump
- Emergency bilge-fire pump
- Water pressure / Hydrophore
- Pool Water filling pump
- Black/Grey Water Pump
- Fuel oil transfer pump
- Emergency hand pump
- Fuel oil filling pump
- Lube oil filling
- Dirty oil discharge pump



Group of selected pumps for yacht engine room

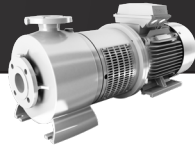


### SERVICE NETWORK

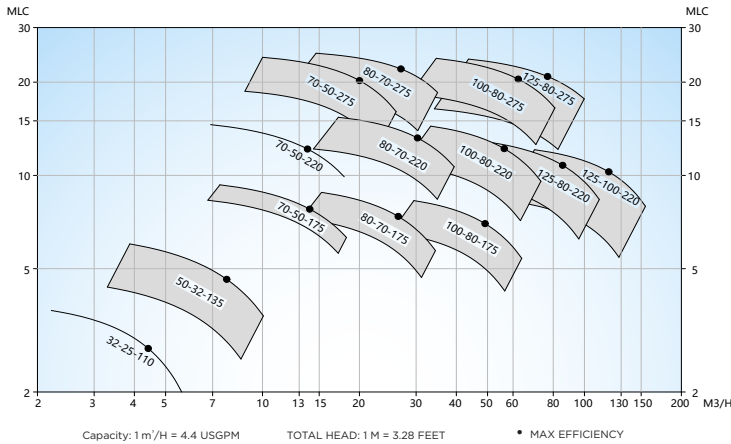
We know that up-time is essential so that the yacht can sail according to your needs and desires, but if needed, our global service network is available 24/7/365.

And to ensure many years of trouble-free operation, we also offer spare parts kits, which make overhauling simple and easy.

For more information on Marine & Offshore solutions, please visit [www.desmi.com](http://www.desmi.com)



### S Centrifugal Pump, 1450 rpm, 50 Hz



#### MODULAR S

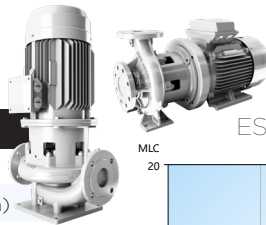
Nominal diameter (DN)	32 to 125
Flow rate	Up to 400 m <sup>3</sup> /h (1760 US gpm)
Head	Up to 150 m (490 ft)
Temperature	Up to 120° C (248° F)
Motor	Standard
VFD	Direct or Bulkhead/Wall-mounted

Test Certificates available according to Major Classes and Flag States upon request.

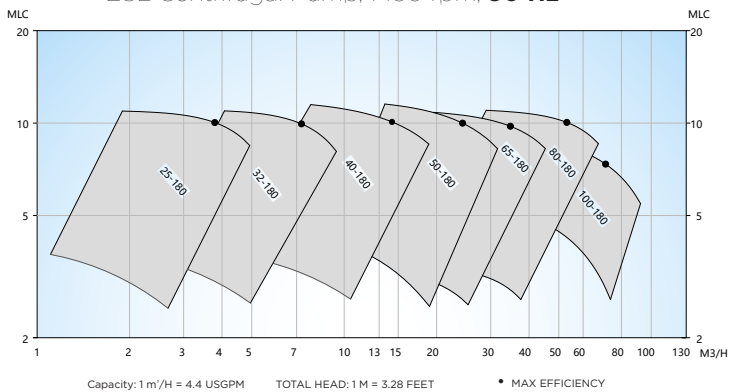
#### ESL / ESLH

Nominal diameter (DN)	25 to 100
Flow rate	Up to 250 m <sup>3</sup> /h (1100 US gpm)
Head	Up to 65 m (210 ft)
Pressure	Up to 30 bar (435 psi)
Temperature	Up to 140° C (248° F)
Motor	Standard and custom selection (Monophase, Triphase 50-60 HZ)
VFD	Direct or Bulkhead/Wall-mounted

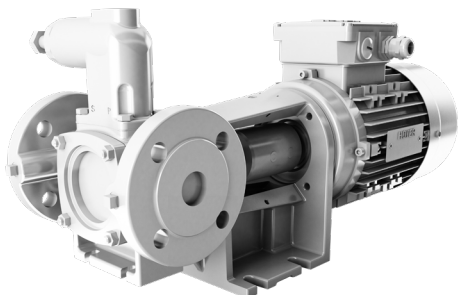
Test Certificates available according to Major Classes and Flag States upon request.



### ESL Centrifugal Pump, 1450 rpm, 50 Hz



## Internal Gear Pump Positive Displacement Pump



One of our most famous ROTAN® internal gear pumps - model GP (General Purpose)

Capacity Range	Up to 50 m <sup>3</sup> /h / 220 gpm
Speed	Up to 1750 rpm
Differential Pressure	Up to 16 bar / 232 psi
Suction Lift	Up to 0,5 bar / 7.25 psi vacuum while priming Up to 0,8 bar / 11.6 psi vacuum while pumping
Viscosity Range	Up to 7,500 cSt
Temperature	Up to 150° C / 302° F
Pump medium	For clean, non abrasive liquids and clean oil. Fuel, diesel, gas, and lube oil.